

Irish Technology and Innovation in Sport Cluster (ITIS)

Gary Ryan,

Project Manager UL Beo,

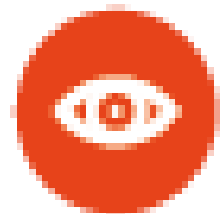
University of Limerick





Parameters in outlining this potential structure

- Fits in with the priorities of the ERDF
- Will give us an edge on a global scale
- Supports SMEs to grow or become stronger
- Would support the development of Research activity that would have an economic impact in Ireland
- Supports Innovation
- Based on the kinds of programmes currently supported by ERDF and similar to other Sports Clusters
- While not directly part of our stated outcomes could support Irish Athletes Performance and Increase Physical Activity levels



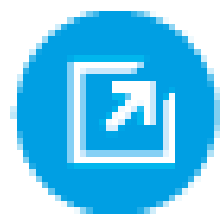
► SMART

Identify the region's own strengths and comparative assets



► SPECIALISED

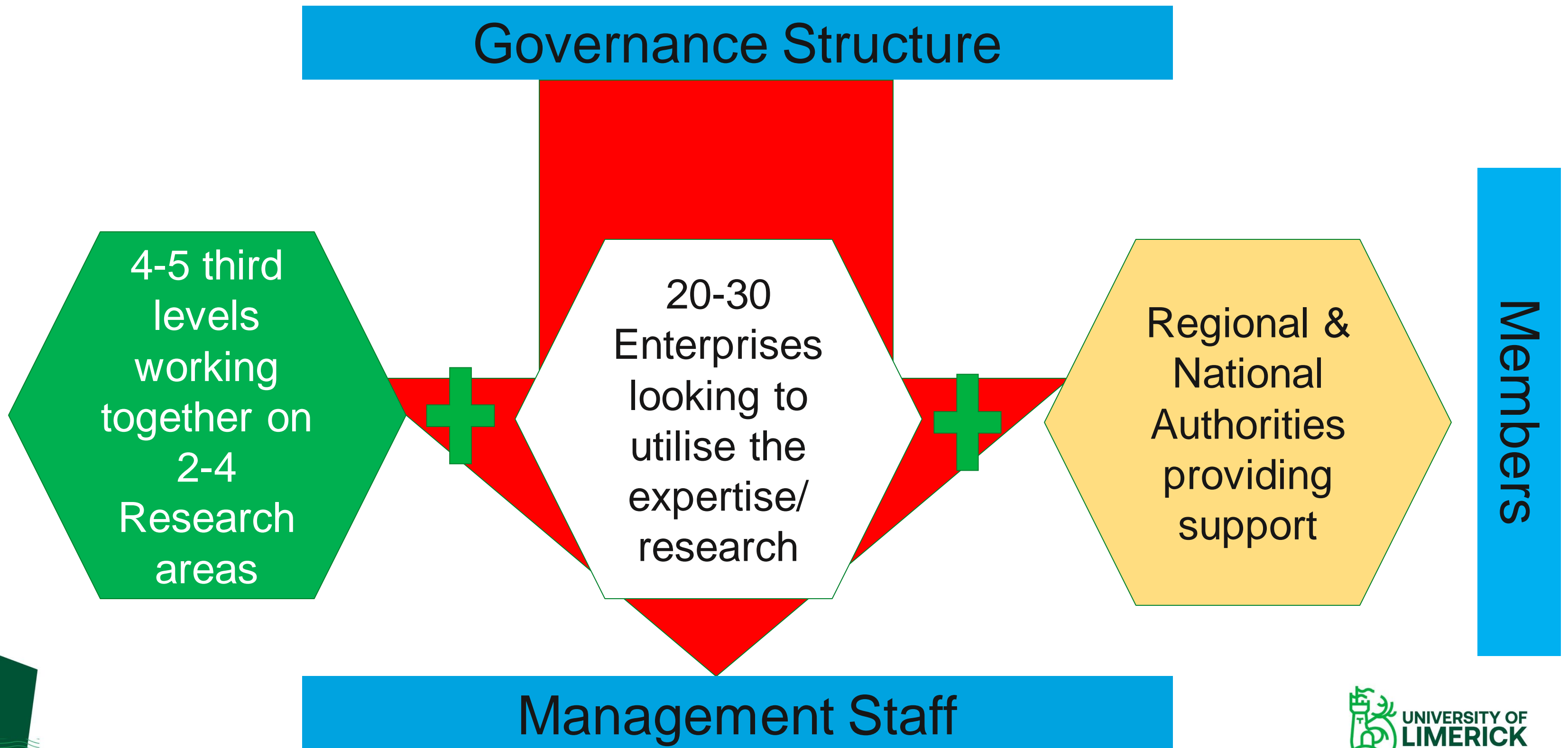
Prioritise research and innovation investment in competitive area



► STRATEGIC

Define a shared vision for regional innovation

How could an Irish Cluster be structured?



What will the cluster do?



Enterprise

- Mentoring, Advice, Networking, Trade Delegations, etc



Knowledge & Expertise

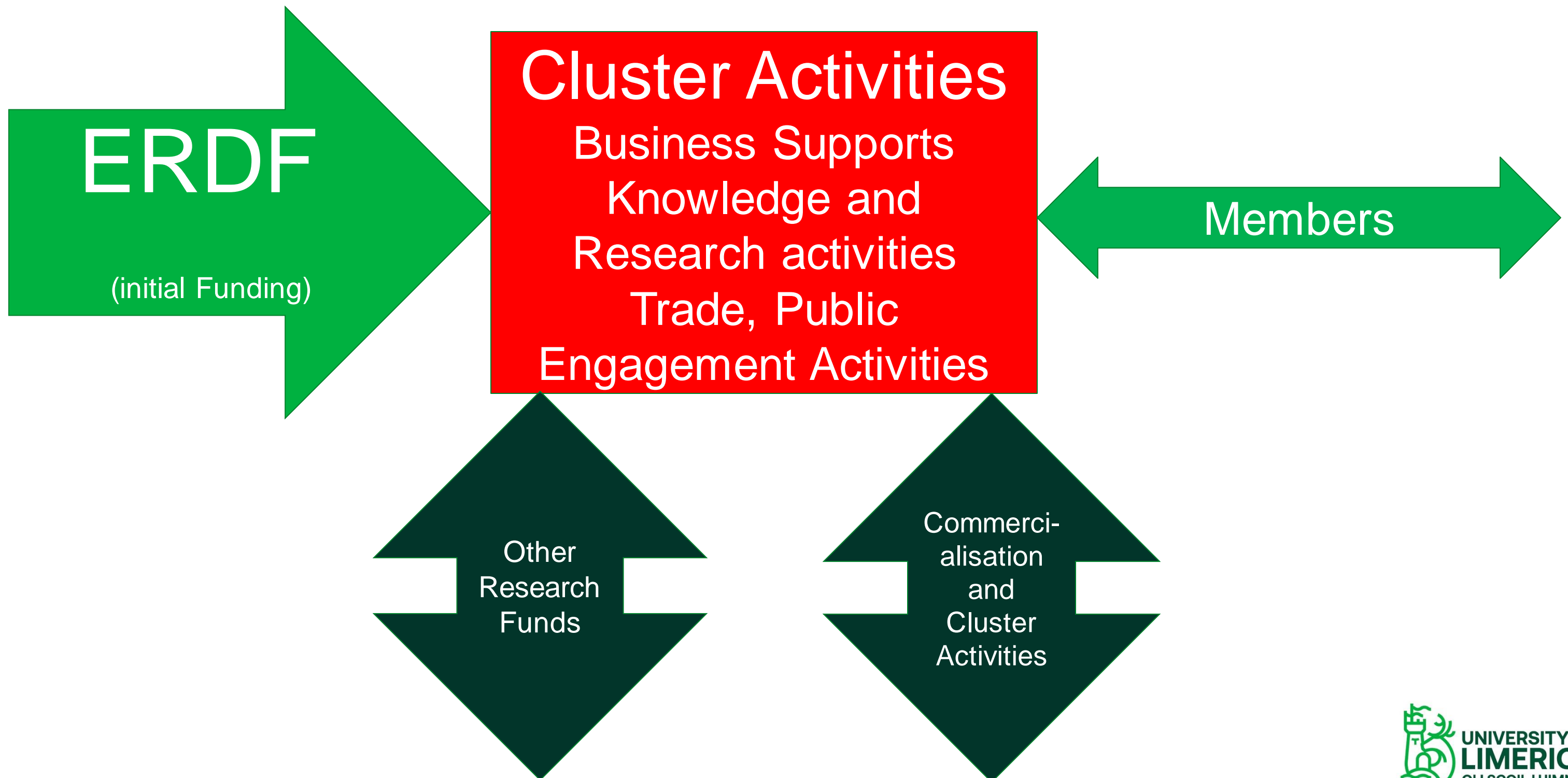
- Research & Knowledge for Members
- Research that can be commercialized



Public Engagement

- Public Events and Engagement showing how Irish Research, Innovation and Companies are having a real impact in Sport and Physical Activity.

How will the Cluster be funded and be sustainable



The Cluster Partners	Who Are they	What does each partner bring?	What might the activities of the cluster be	What are the outputs	What is the Goal
Enterprise	SMEs Start Ups NGBs LSPs	Experience Network Ideas Problems			
Knowledge Providers	Third Levels	Existing Research New Research Facilitation Skills	• Peer Mentoring • Trade Missions • Research • Funding Advice	• Better funding • More SMEs • More Sustainable SMEs • Research • Patents • Commercialisation of Research	Jobs <ul style="list-style-type: none"> Increased Physical Activity Improved Performance of our Athletes
National & Local Governmental Organisations	Regional Authorities Local Authorities Enterprise Ireland Sport Ireland	Knowledge Finance Facilities			



Our key questions today?

- What does Enterprise need?
- What can Third Levels offer?
- What else do we need/ can we do/ should we do?

What are the Cluster activities that Enterprise requires

- Networking
- Trade Missions
- Technical Expertise
- Funding Expertise
- Research



www.menti.com

64 32 59





What might be the activities that knowledge providers might be able to support

- Focus on 2-4 key areas (you decide-but bear in mind)
 - SMART Specialisation
 - Where can Ireland have an edge internationally?
 - Where can Irish research have an economic impact?
 - Provide evidence based expertise?

What else?



Go to www.menti.com and use the code 64 32 59

Mentimeter

What services do you think Enterprise would want from a Cluster?



30



Go to www.menti.com and use the code 64 32 59

Mentimeter

What areas of Research & Expertise should we pursue as part of a cluster

green exercise
consistent methods
community generation
exergaming
location messaging
elite to everyday tech
all ages
ict
e sport
multi site interventions
performance enhancement
data clusters
data visualisation
use of it in sport
technology
innovation

7

Thank you



University of Limerick,
Limerick, V94 T9PX,
Ireland.
Ollscoil Luimnigh,
Luimneach,
V94 T9PX, Éire.
+353 (0) 61 202020

ul.ie